

Elite

Richland




Commodore
Homes
of Pennsylvania

TABLE OF CONTENTS

Pg	Model	Size	Sq. Ft.
4	GF3001P	2856	1493
4	GF3002P	2856	1493
5	GF3003P	2860	1600
5	GF3011P	2860	1600
6	GF3006P	2864	1640
7	GF3004P	2864	1707
7	GF3005P	2864	1707
8	GF3007P	2864	1707
9	GF3009P	2860/72	1742
10	GF3008P	2868	1813
10	GF3010V	3264	1920
11	GF3010V PHOTOS		

*Due to continued product improvements, changes in supplies or design;
PICTURES may not accurately depict our current product offering.

Cabinet Selections



French Country Oak Mission Flat Panel
Available in Hardwood and MDF



Hearthstone Hickory Mission Flat Panel
Available in Hardwood and MDF



Cloud Grey Mission Flat Panel
Available in Painted Hardwood

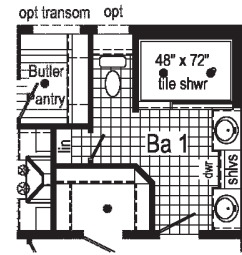
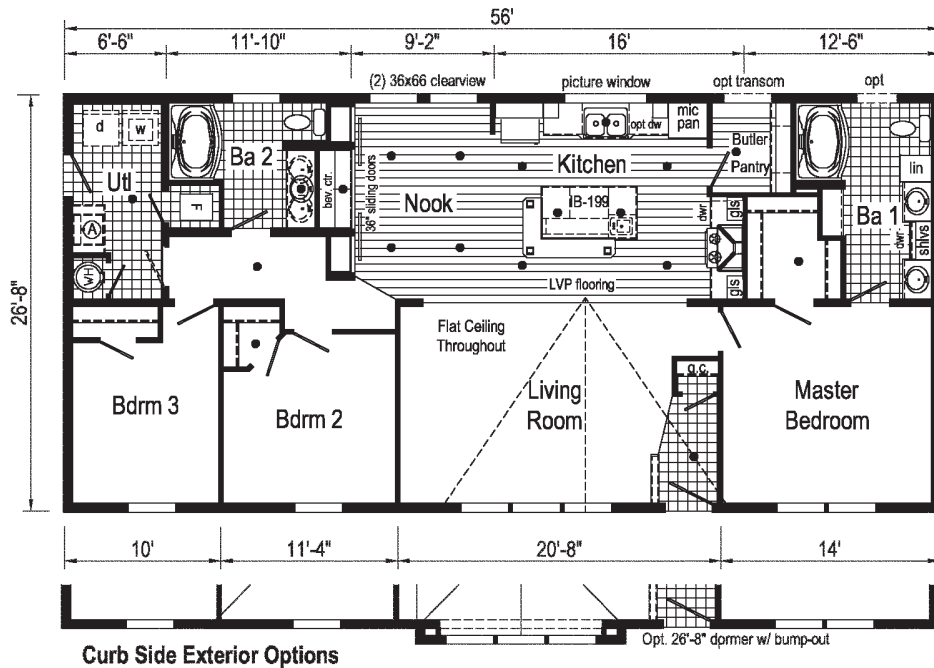


Storm Grey Mission Flat Panel
Available in Painted Hardwood



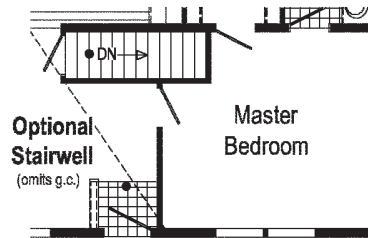
White Oak Mission Flat Panel
Available in Painted Hardwood



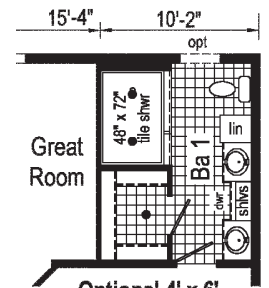
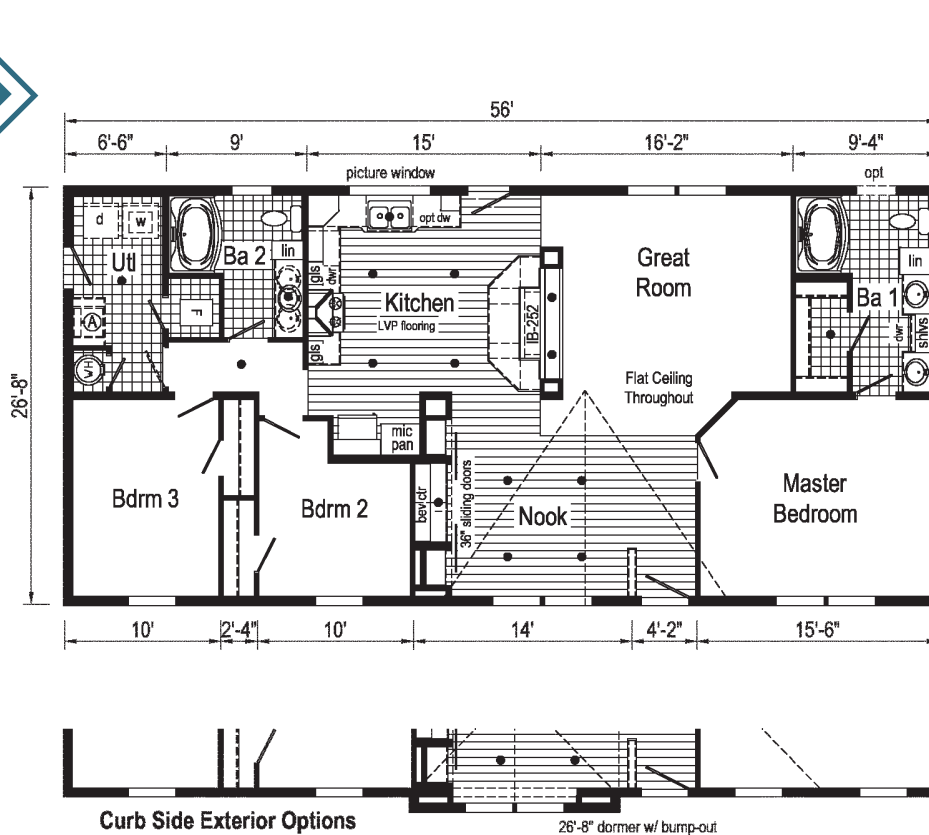


Optional 4' x 6' Walk-In Tile Shower

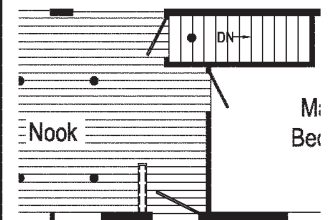
GF3001P
1493 Sq. Ft.
2856

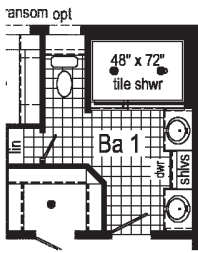
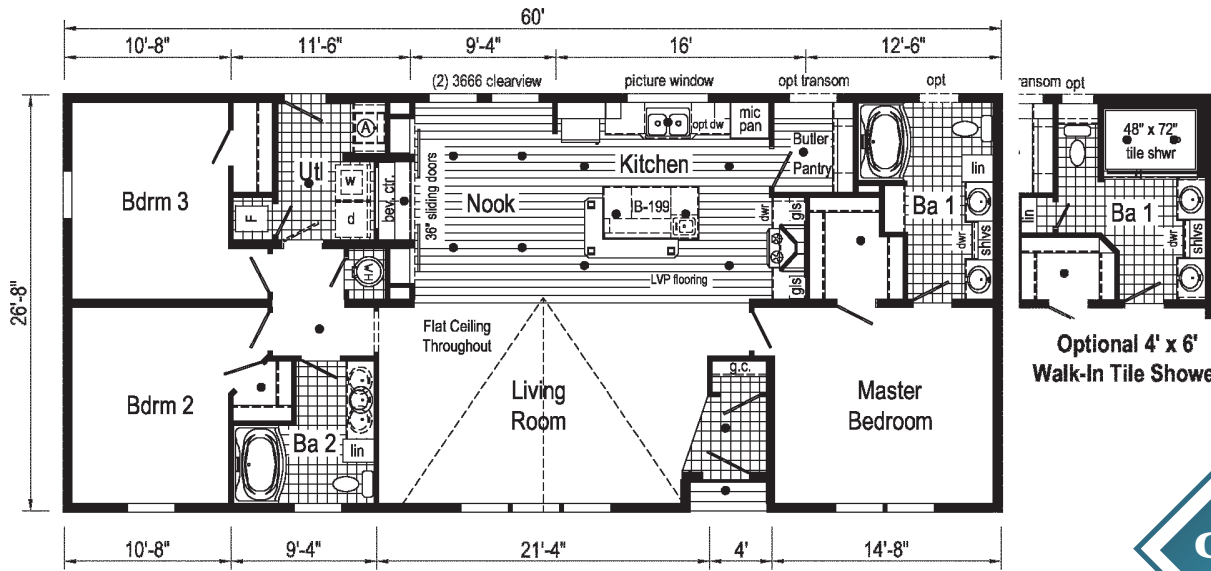


GF3002P
1493 Sq. Ft.
2856



Optional 4' x 6' Walk-In Tile Shower



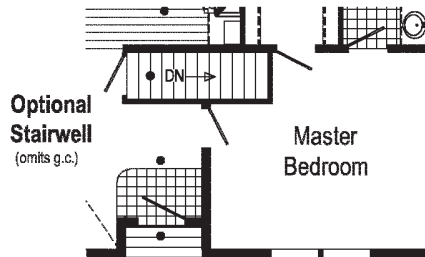


Optional 4' x 6'
Walk-In Tile Shower

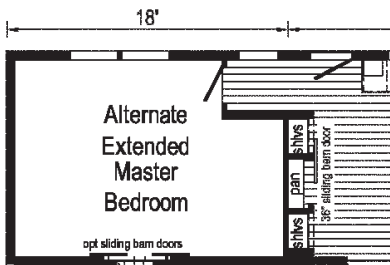
GF3003P
1600 Sq. Ft.
2860



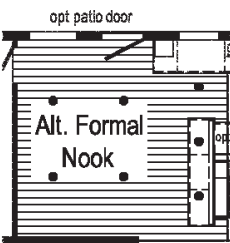
Scan to
Watch
Video!



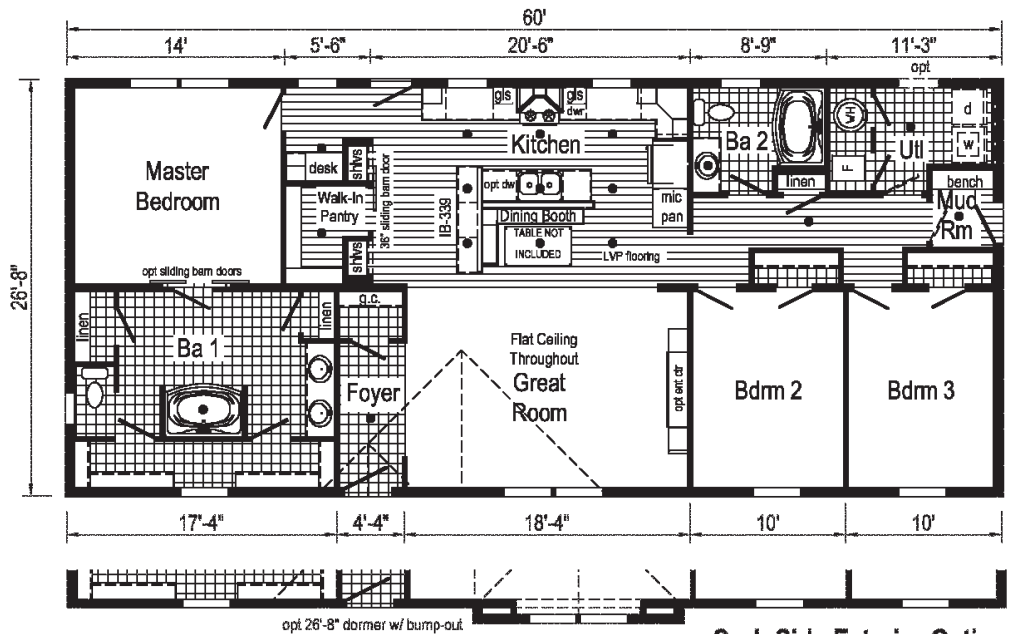
Optional
Stairwell
(omits g.c.)



(omits walk-in pantry & desk)

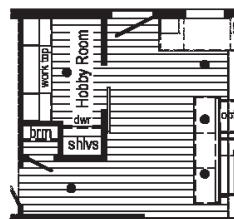


(omits walk-in pantry,
desk & sliding doors)

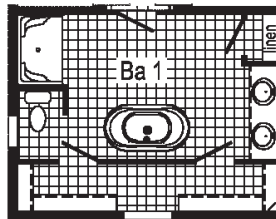


Curb Side Exterior Options

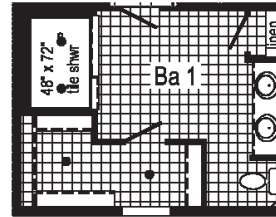
GF3011P
1600 Sq. Ft.
2860



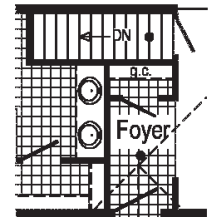
Alternate Hobby Room



Optional Freestanding
Tub with Shower

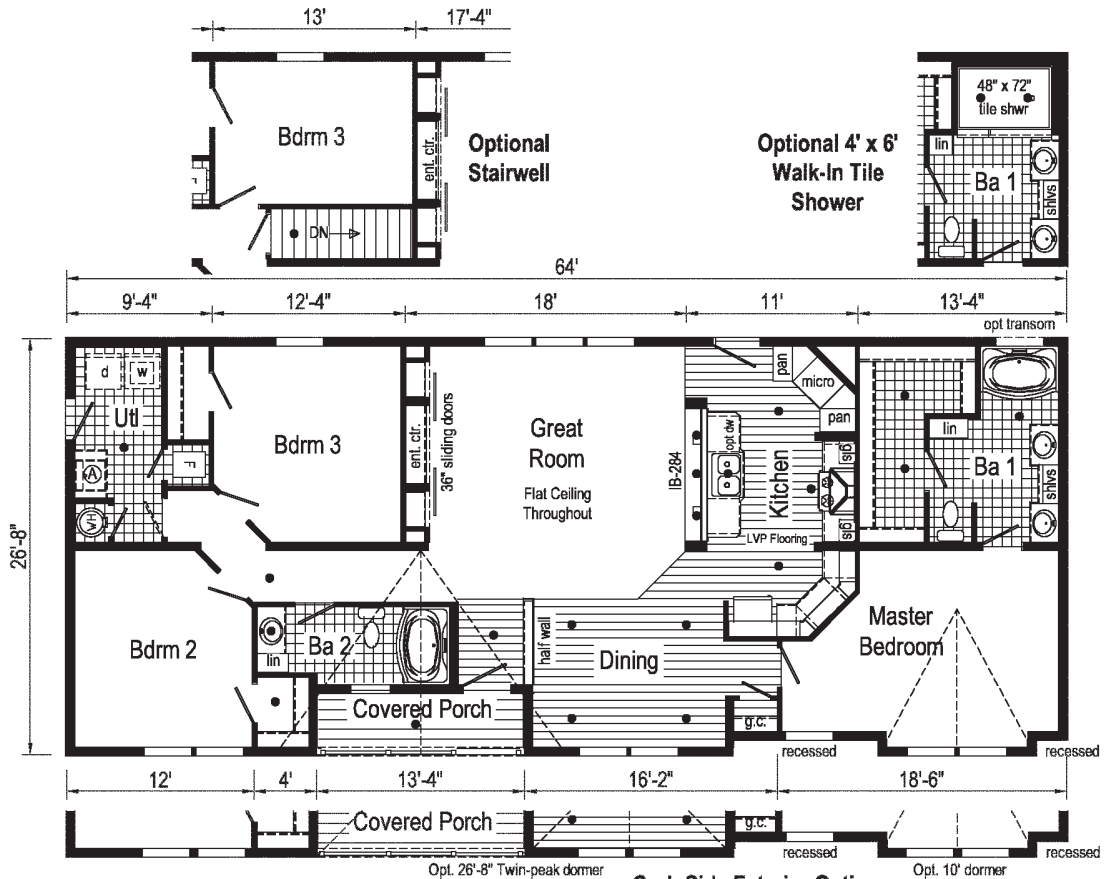


Optional
4' x 6' Walk-In
Tile Shower



Optional
Stairwell
(omits linen)

GF3006P
 1640 Sq. Ft.
 2864



Curb Side Exterior Options



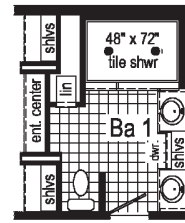
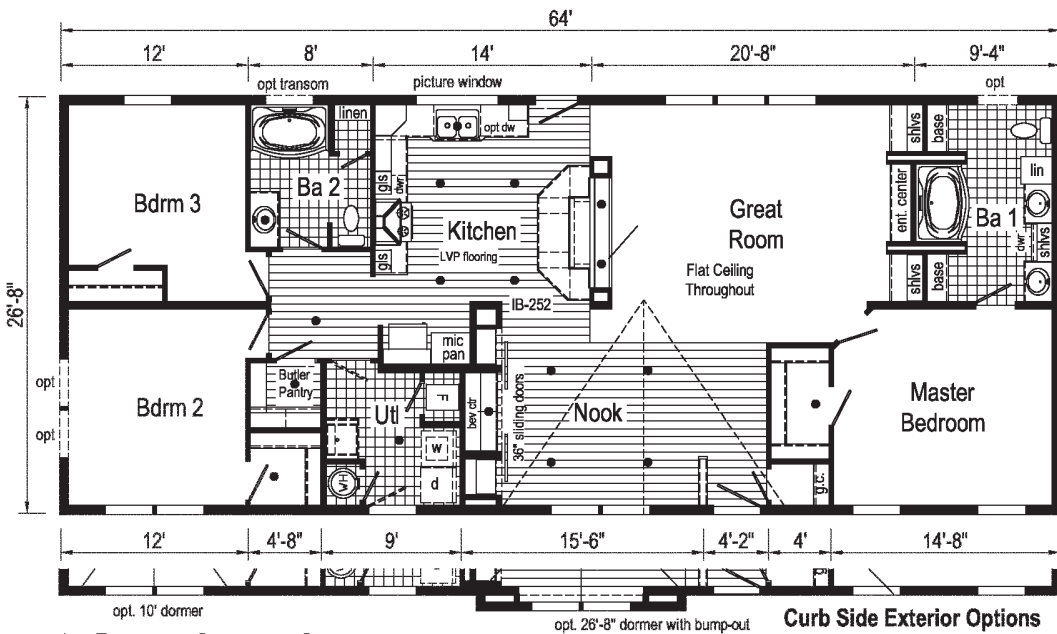
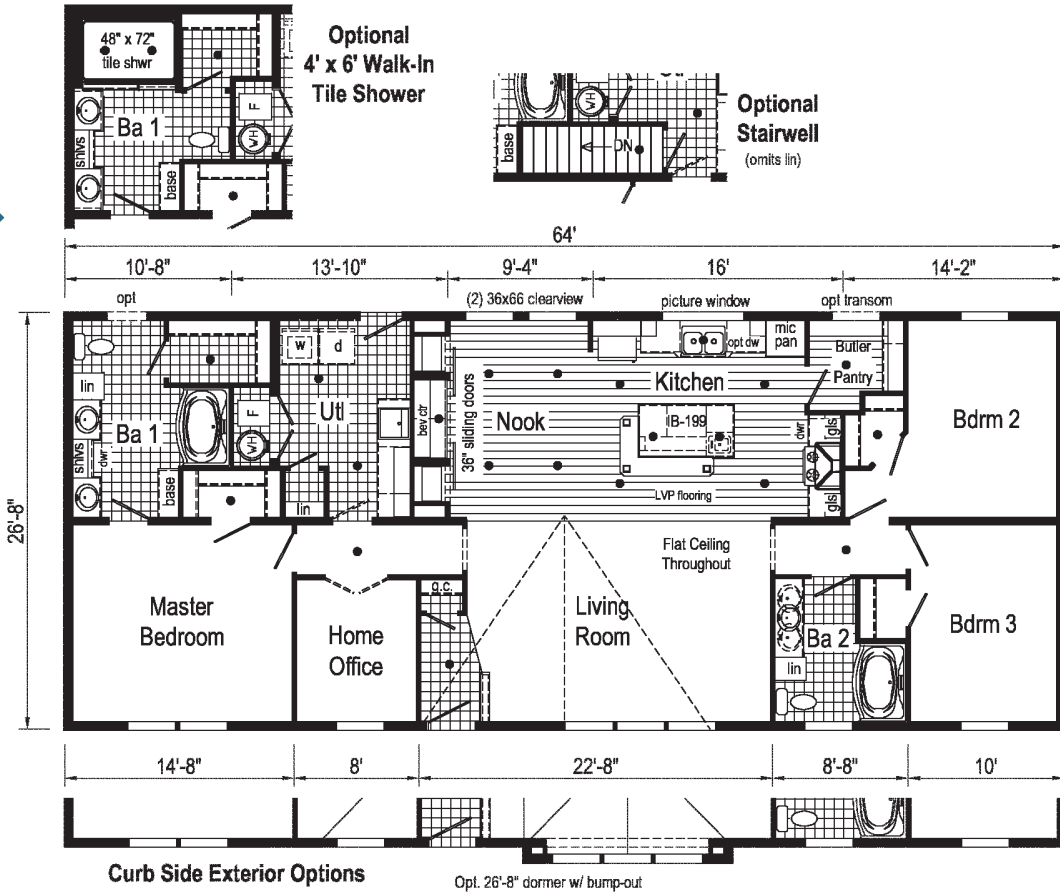
**This cabinet color has been discontinued



Scan to
 Watch
 Video!

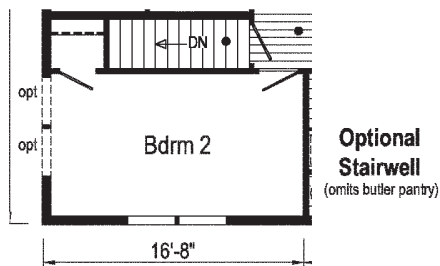


GF3004P
 1707 Sq. Ft.
 2864



Optional 4'x6' Walk-In Tile Shower

GF3005P
 1707 Sq. Ft.
 2864





*Please use pictures for floorplan vision only. Decors and materials used are constantly changed and improved.

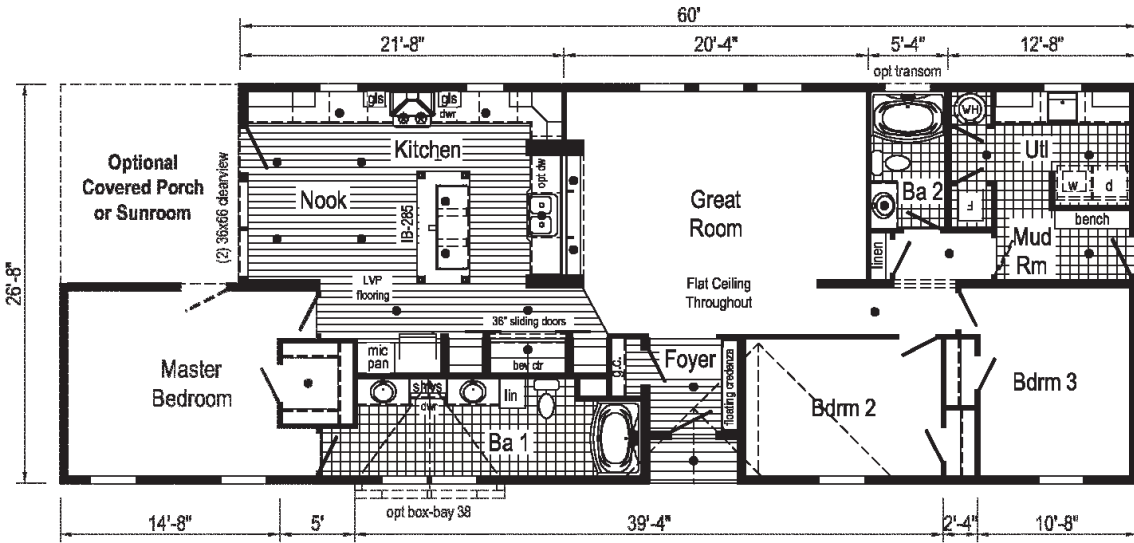
**This cabinet color has been discontinued



Scan to Watch Video!

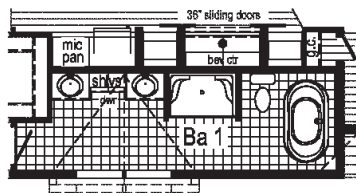
GF3007P
1707 Sq. Ft.
2864



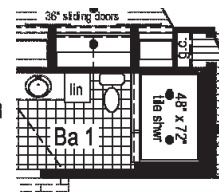


GF3009P
 1742 Sq. Ft.
 2860/72

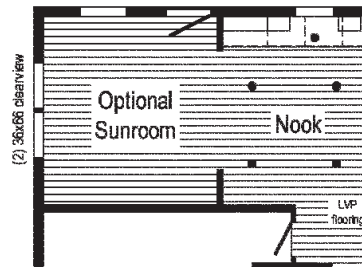
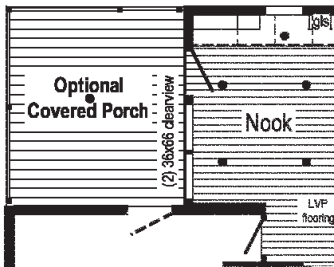
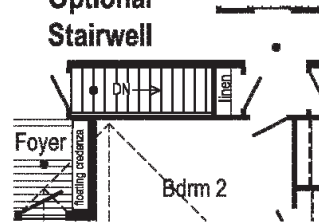
Optional Freestanding Tub with Shower
 (omits linen)



Optional 4'x6' Walk-In Tile Shower



Optional Stairwell



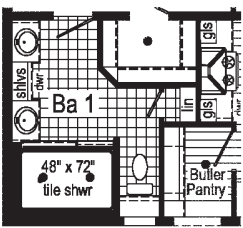
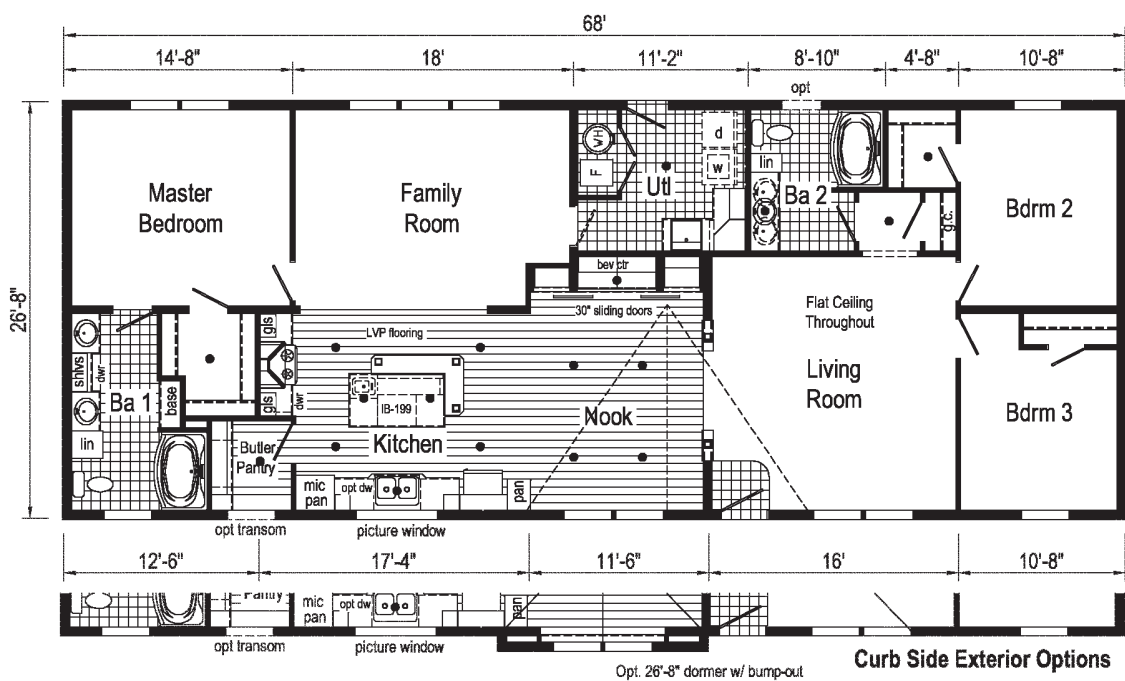
*Please use pictures for floorplan vision only. Decors and materials used are constantly changed and improved.



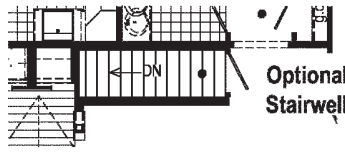
Scan to Watch Video!

**This cabinet color has been discontinued

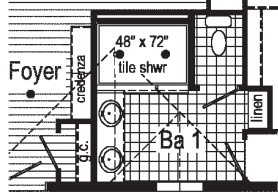
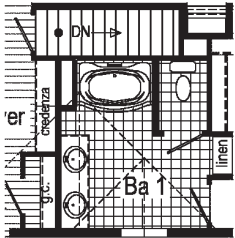
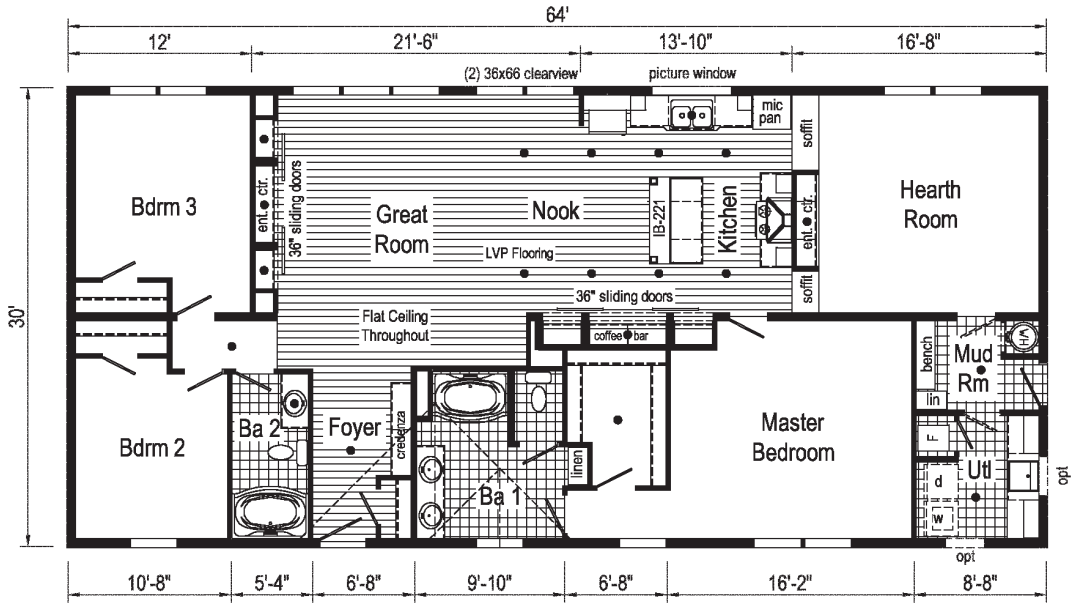
GF3008P
 1813 Sq. Ft.
 2868



Optional 4' x 6' Walk-In Tile Shower



GF3010V
 1920 Sq. Ft.
 3264



Optional 4'x6' Walk-In Tile Shower



*Please use pictures for floorplan vision only. Decors and materials used are constantly changed and improved.

GF3010V
PHOTOS



Scan to
Watch
Video!





Commodore
Homes
of Pennsylvania

20898 Paint Blvd
Shippenville, PA 16254
(814) 226-9210

www.commodore-pa.com



www.commodore-pa.com/inhouse-experience

Elite

Richland

Your Independent Retailer is:



14221 Conneaut Lake Rd.
Meadville, PA 16335
(814)382-9531
www.BayshoreHomesInc.com
BayshoreInfo@BayshoreHomesInc.com

Connect with Us:



Your purchase contract, including options, is with your retailer who is an independent contractor, not our agent, and who is responsible totally for any alterations, exchanges, additions or attachments made in or to your home.

All descriptive representations of the products on this brochure are believed to be correct at the time of publication. However, due to continued product improvement and changes in suppliers, design and production, accuracy cannot be guaranteed. Therefore, equipment, colors, material specifications, prices and model availability are subject to change without notice. All information and images contained in this brochure are property of The Commodore Corporation and for the use by active dealers of the company only. © TCC 8/21