



PENNWEST

reserve

R

Belle Àme



French Country Oak
Mission Flat Panel



Barnwood Oak
Mission Flat Panel



Warm Sienna
Mission Flat Panel



Hickory
Raised Panel



Shadow Grey
Mission Flat Panel



White
Mission Flat Panel



Precision Cut and Dadoed Construction Fastened and Hot Glued - Ensures a Long Lasting and Square Cabinet Box

3/4 Overlaid Cabinet Doors & Drawer - Limited Exposure of Cabinet Stiles

3/4" Thick Shelving with Finished Edges - Prevents Warping of Shelves

Base and Wall Cabinet Adjustable Shelving - Fit Your Lifestyle

3/4" Face Frames - Durable and Securely Holds Fasteners for Long Lasting Use

Pocket Screws - Ensure a Strong and Square Frame

Dove-Tail Constructed Drawers - Superior Drawer Strength

Undermount Soft Close Drawer Guides

Concealed and Recessed Hinges - Superior Door Strength

Recessed Toe Kick - Work at Counters with Ease

No Exposed Hanging Cleats- More Storage and Cleaner Look

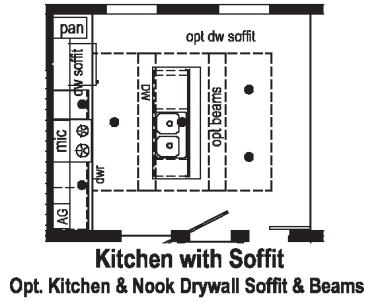
KCMA Testing

- Overhead Cabinets Rated to 500 pound Capacity
- Drawers Opened 28,000 Times with Weight
- Cabinet Doors Opened 25,000 Times
- Extreme Testing of Cabinet Finish

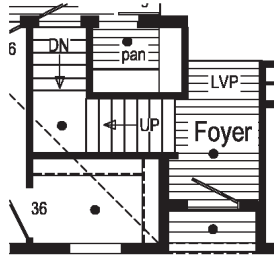


Evermore Custom Cabinets endure a series of rigorous tests, measuring structural integrity. Cabinet doors, drawers and even the finish are tested before earning the KCMA Cabinet Certification.

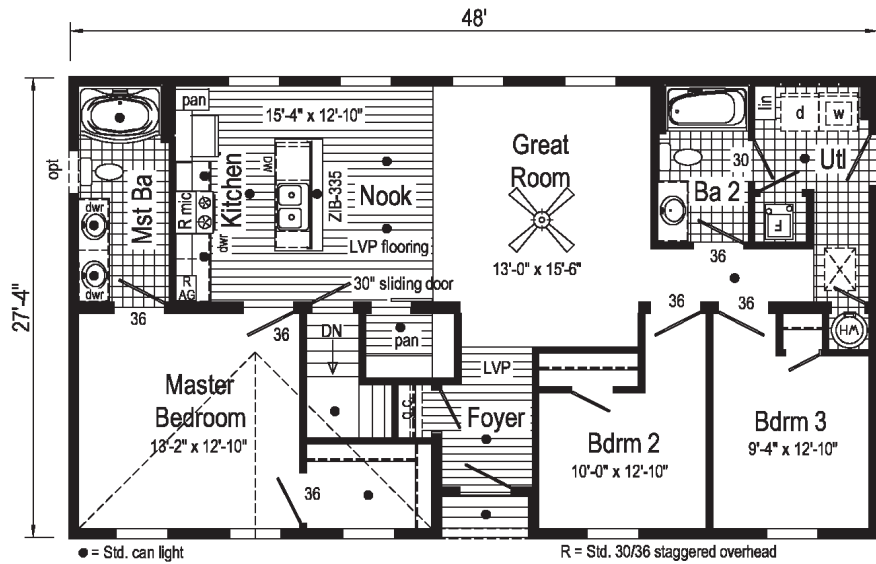
Visit www.KCMA.org
for more information



Kitchen with Soffit
Opt. Kitchen & Nook Drywall Soffit & Beams



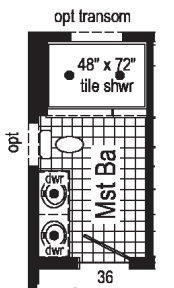
Opt. Open Attic Stairs



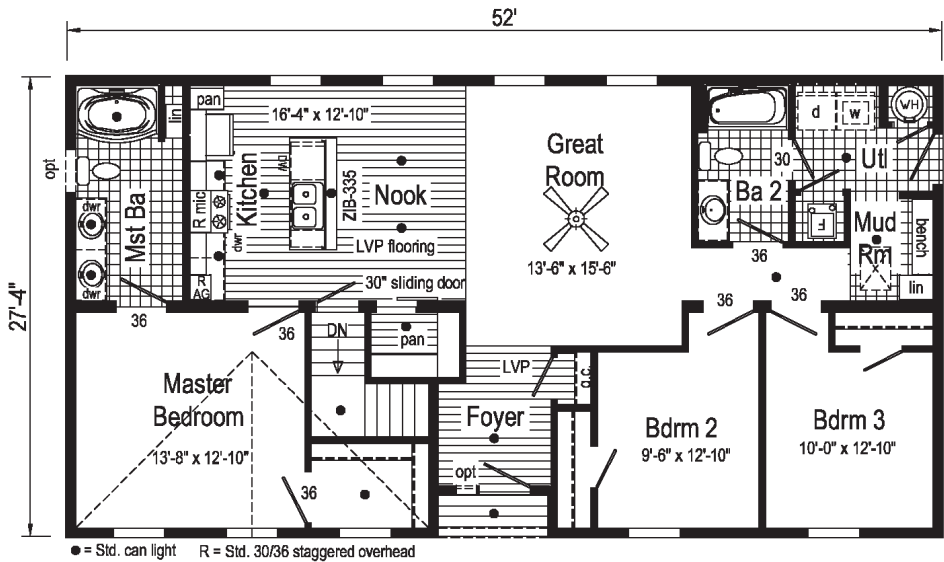
Belle Àme 1

2P2701R

28x48 Approx. 1299 sq ft



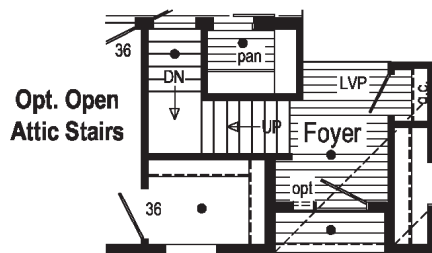
Optional 4'x6' Walk-In Tile Shower



Belle Àme 2

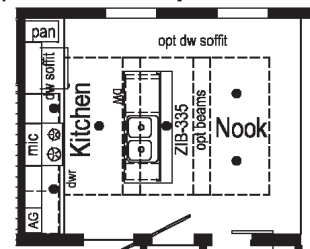
2P2702R

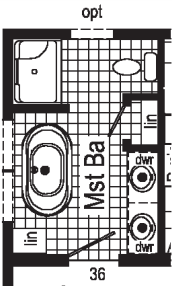
28x52 Approx. 1405 sq ft



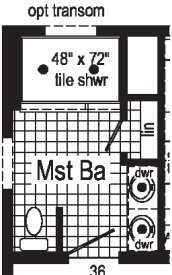
Opt. Open Attic Stairs

Kitchen with Soffit
Opt. Kitchen & Nook Drywall Soffit & Beams



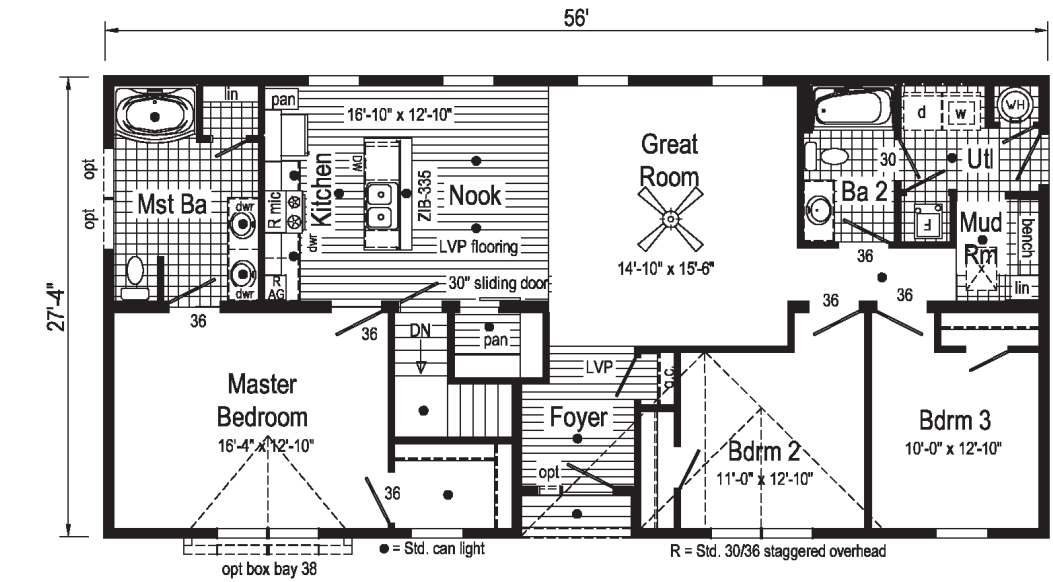


Optional Freestanding Tub with Shower

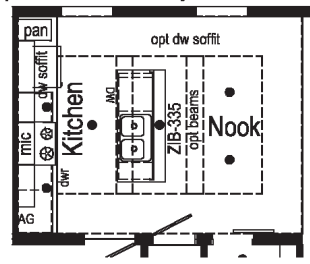
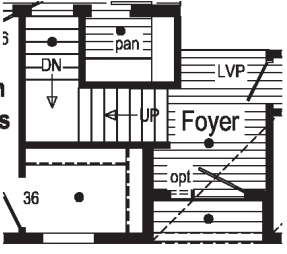


Optional 4'x6' Walk-In Tile Shower

Opt. Open Attic Stairs



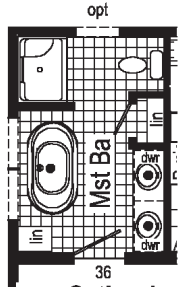
**Kitchen with Soffit
Opt. Kitchen & Nook Drywall Soffit & Beams**



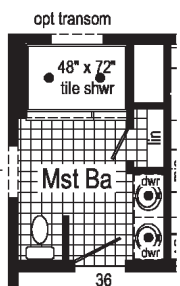
Belle Àme 3

2P2703R

28x56 Approx. 1515 sq ft

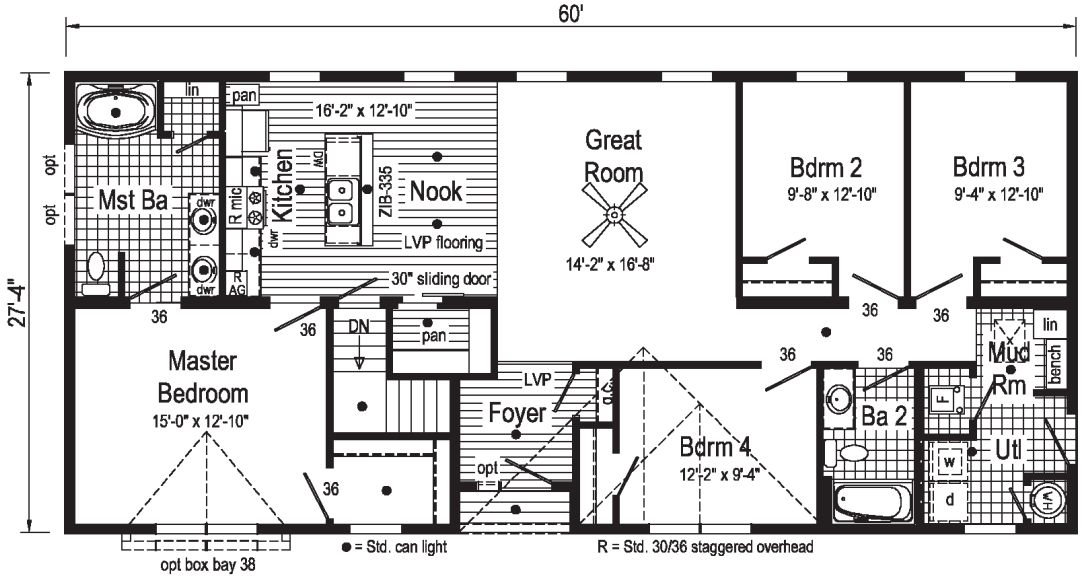


Optional Freestanding Tub with Shower

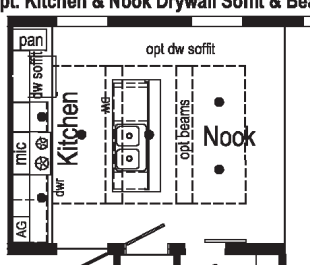
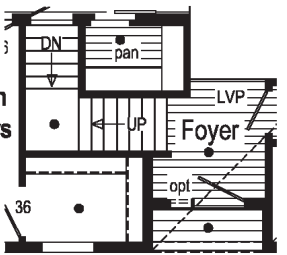


Optional 4'x6' Walk-In Tile Shower

Opt. Open Attic Stairs



**Kitchen with Soffit
Opt. Kitchen & Nook Drywall Soffit & Beams**



Belle Àme 4

2P2704R

28x60 Approx. 1624 sq ft

Belle Àme 3 Photos



Scan to Watch Video!



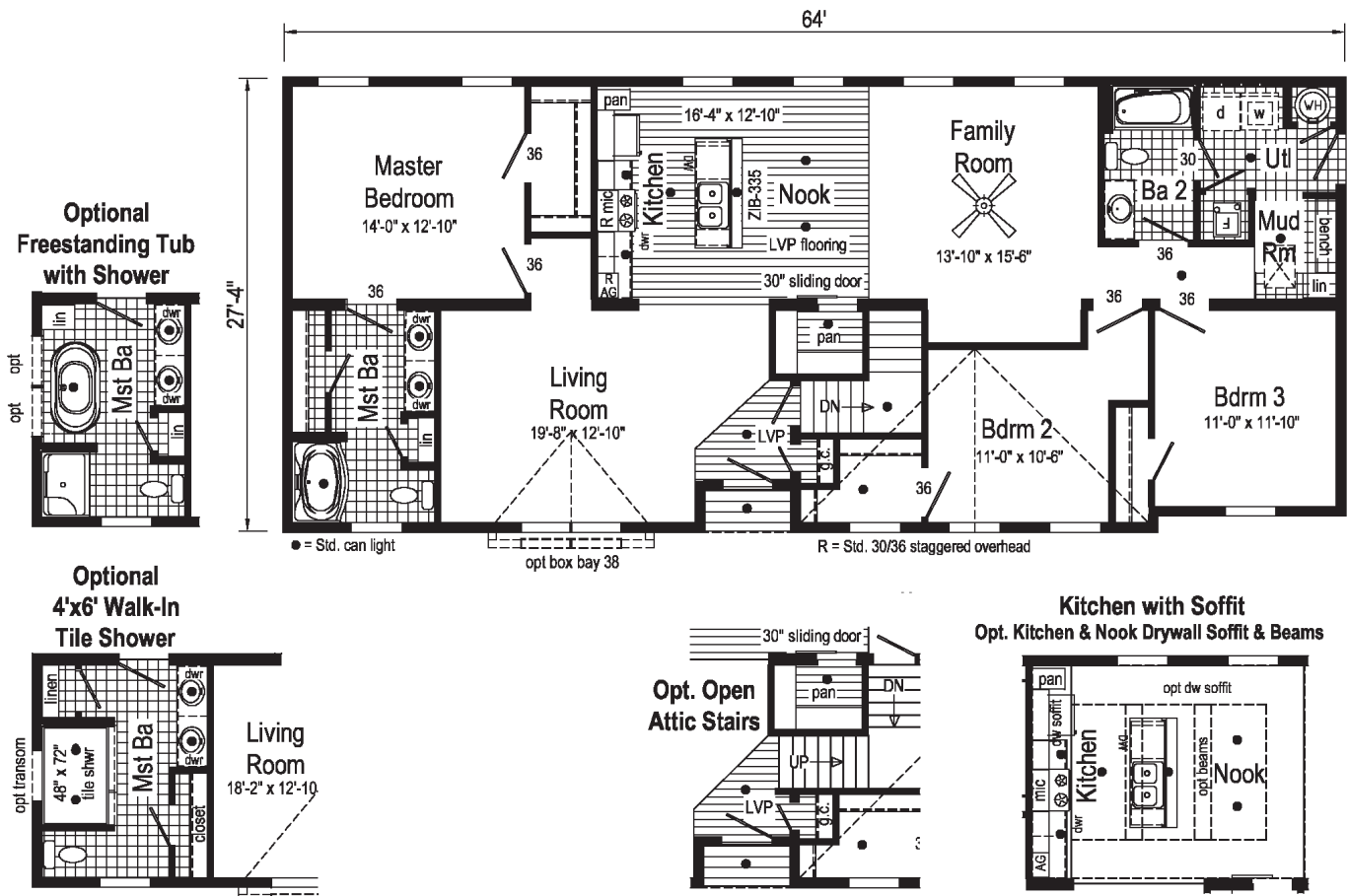
Belle Àme 5



2P2705R

28x64 Approx. 1724 sq ft

Some features shown may be optional or added on-site by others.



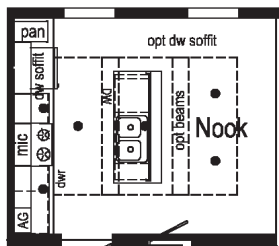
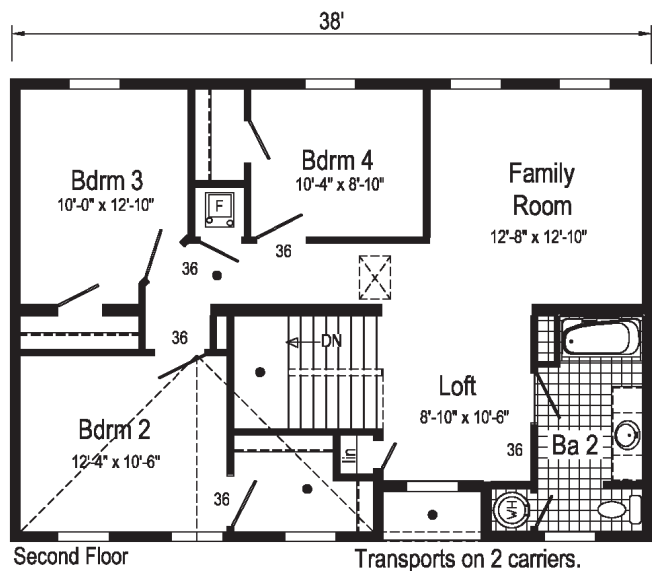
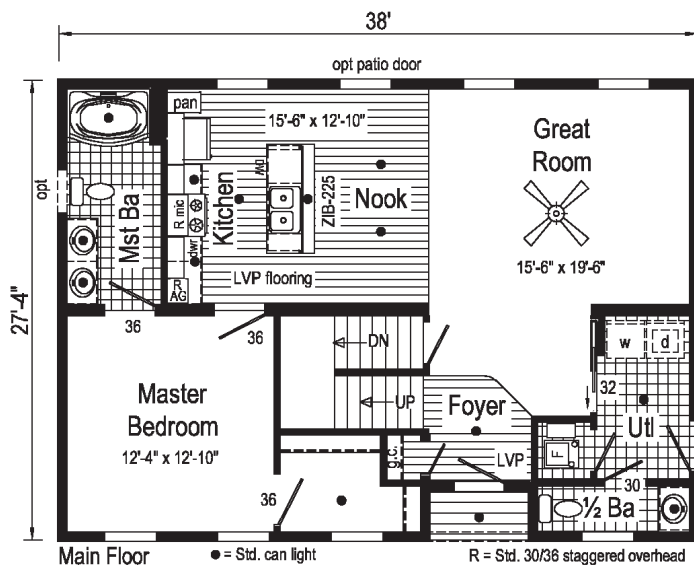
Belle Àme 6



6P2701R

28x38 Approx. 2042 sq ft

Some features shown may be optional or added on-site by others.



Kitchen with Soffit
Opt. Kitchen & Nook Drywall Soffit & Beams

Reserve Bella Àme



PENNWEST
H O M E S



Your Independent Retailer is:

Pennwest Homes
4 Pennwest Way Route 38
Emlenton, PA 16373
www.pennwesthomes.com

Connect with Us!



All descriptive representations of the products on this brochure are believed to be correct at the time of publication. However, due to continued product improvement and changes in suppliers design and production, accuracy cannot be guaranteed. Therefore, equipment colors, material specifications, prices and model availability are subject to change without notice. All information and images contained in this brochure are property of The Commodore Corporation and for the use by active dealers of the company only. © TCC 9/19