



**PENNWEST**

**reserve**

**R**

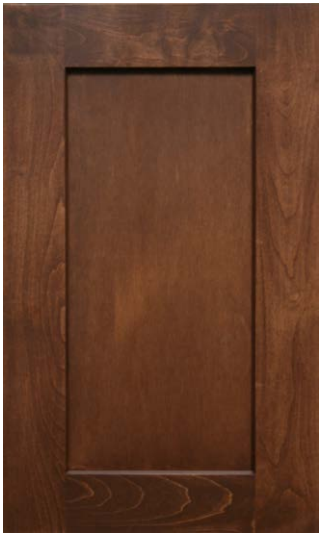
**ULTRA**



French Country Oak  
Mission Flat Panel



Barnwood Oak  
Mission Flat Panel



Warm Sienna  
Mission Flat Panel



Hickory  
Raised Panel



Shadow Grey  
Mission Flat Panel



White  
Mission Flat Panel



Precision Cut and Dadoed Construction Fastened and Hot Glued - Ensures a Long Lasting and Square Cabinet Box

3/4 Overlaid Cabinet Doors & Drawer - Limited Exposure of Cabinet Stiles

3/4" Thick Shelving with Finished Edges - Prevents Warping of Shelves

Base and Wall Cabinet Adjustable Shelving - Fit Your Lifestyle

3/4" Face Frames - Durable and Securely Holds Fasteners for Long Lasting Use

Pocket Screws - Ensure a Strong and Square Frame

Dove-Tail Constructed Drawers - Superior Drawer Strength

Undermount Soft Close Drawer Guides

Concealed and Recessed Hinges - Superior Door Strength

Recessed Toe Kick - Work at Counters with Ease

No Exposed Hanging Cleats- More Storage and Cleaner Look

### KCMA Testing

- Overhead Cabinets Rated to 500 pound Capacity
- Drawers Opened 28,000 Times with Weight
- Cabinet Doors Opened 25,000 Times
- Extreme Testing of Cabinet Finish



Evermore Custom Cabinets endure a series of rigorous tests, measuring structural integrity. Cabinet doors, drawers and even the finish are tested before earning the KCMA Cabinet Certification.

Visit [www.KCMA.org](http://www.KCMA.org)  
for more information



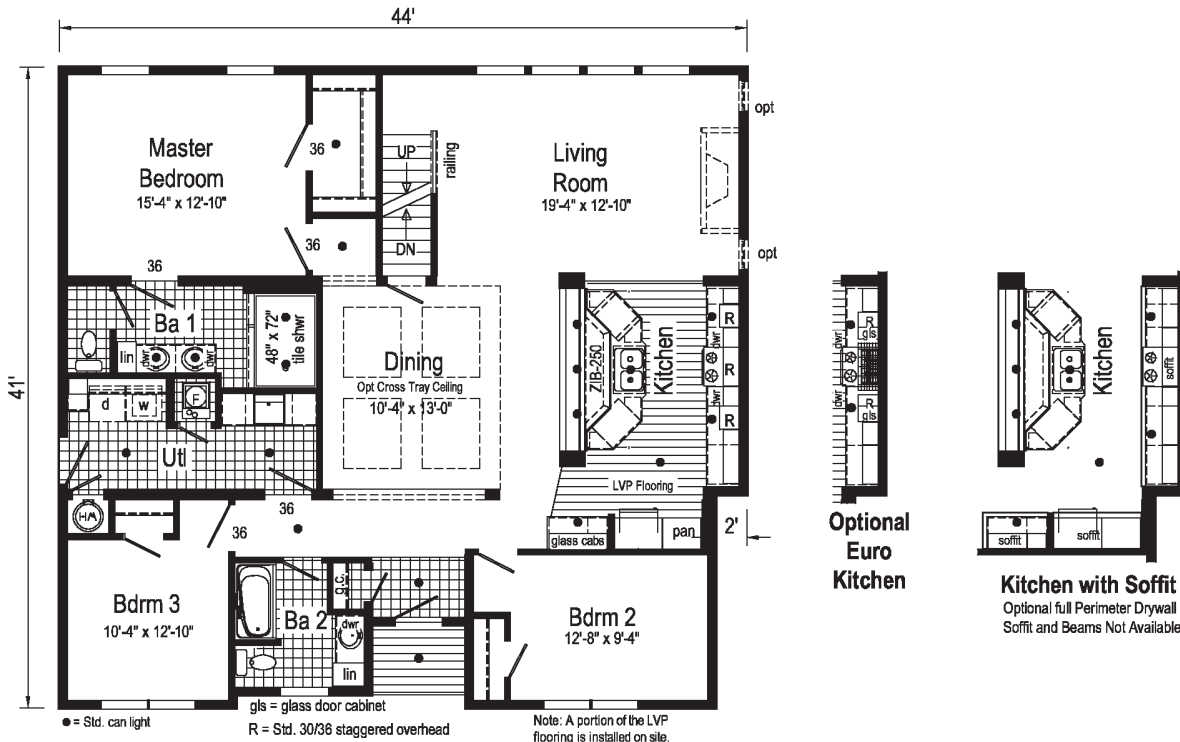
# Ultra 1



4P2401R

42x44 Approx. 1737 sq ft

Some features shown may be optional or added on-site by others.



# Ultra 2

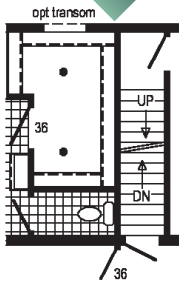


2P2402X

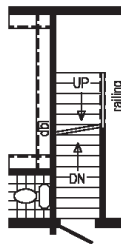
32x68 Approx. 2066 sq ft

Some features shown may be optional or added on-site by others.

Optional Stairwell



Opt Attic Stairs

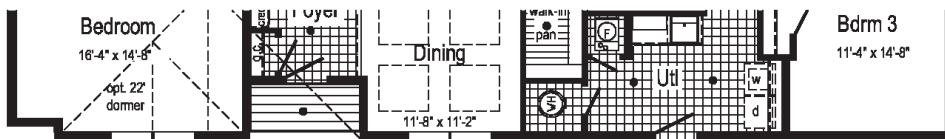
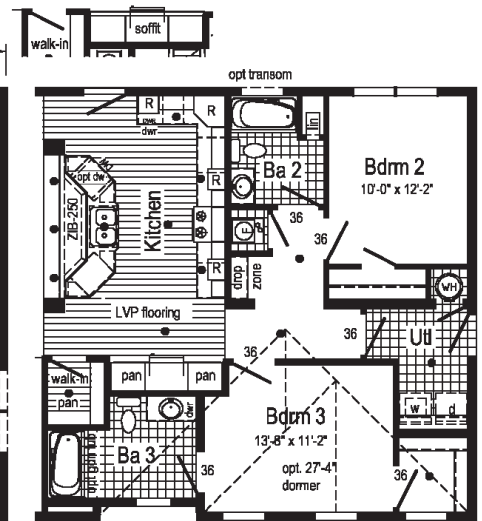
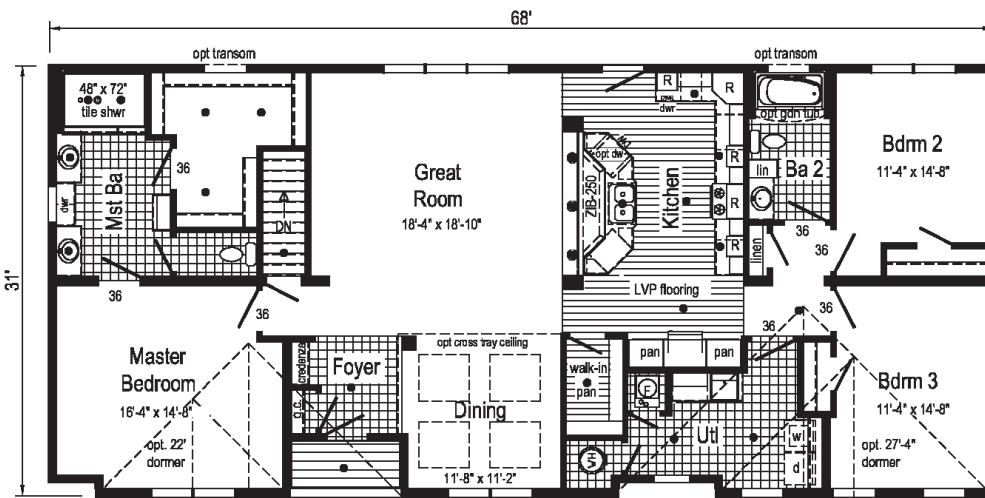
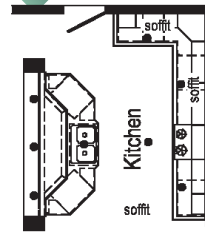


Optional Euro Kitchen



Kitchen with Soffit

Optional full perimeter Drywall Soffit and Beams Not Available.



Alternate Application for Front Garage

# Ultra 2 Photos



Scan to Watch Video!



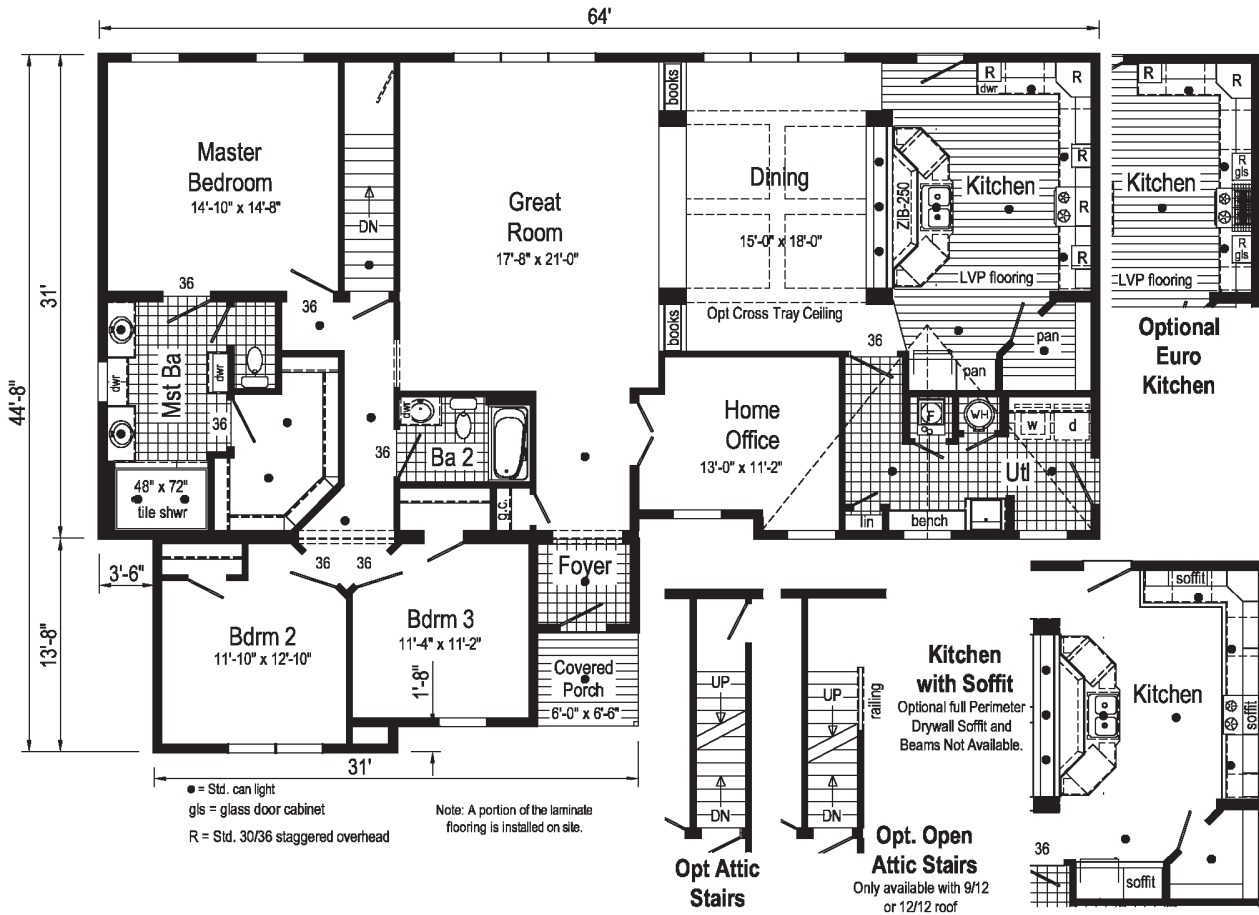
# Ultra 3



**3P2401X**

**46x64 Approx. 2333 sq ft**

Some features shown may be optional or added on-site by others.



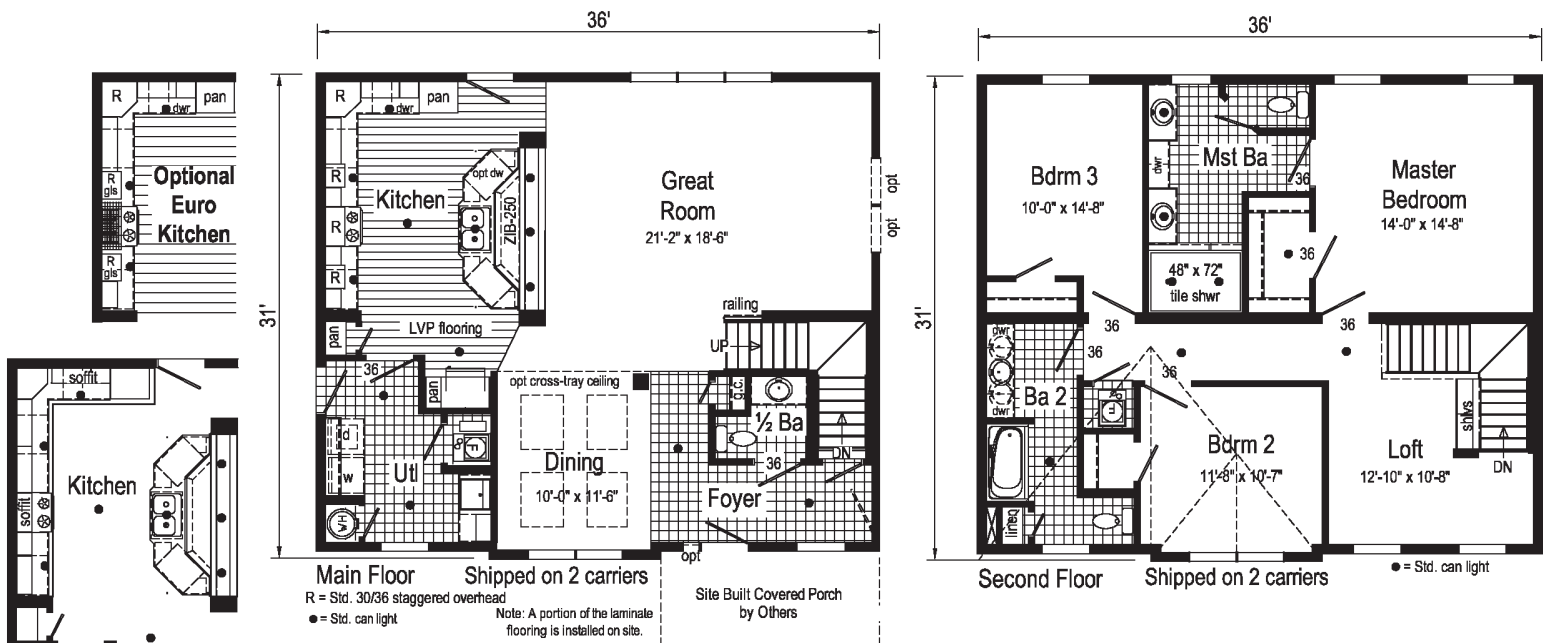
# Ultra 4



6P2401X

32x36 Approx. 2206 sq ft

Some features shown may be optional or added on-site by others.



**Kitchen with Soffit**  
 Optional full Perimeter Drywall Soffit and Beams Not Available.

# Ultra 5



6P2402X

32x60/36 Approx. 2579 sq ft

Some features shown may be optional or added on-site by others.





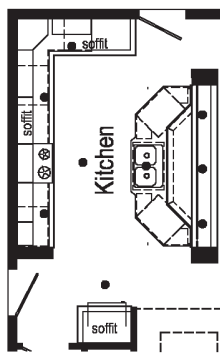
# Ultra 6



2P2401X

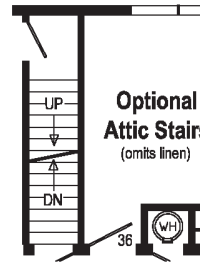
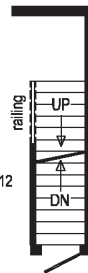
32x60 Approx. 1827 sq ft

Some features shown may be optional or added on-site by others.

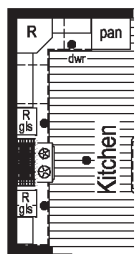


**Kitchen with Soffit**  
Optional full Perimeter Drywall Soffit and Beams Not Available.

**Opt. Open Attic Stairs**  
Only available with 9/12 or 12/12 roof (omits linen)

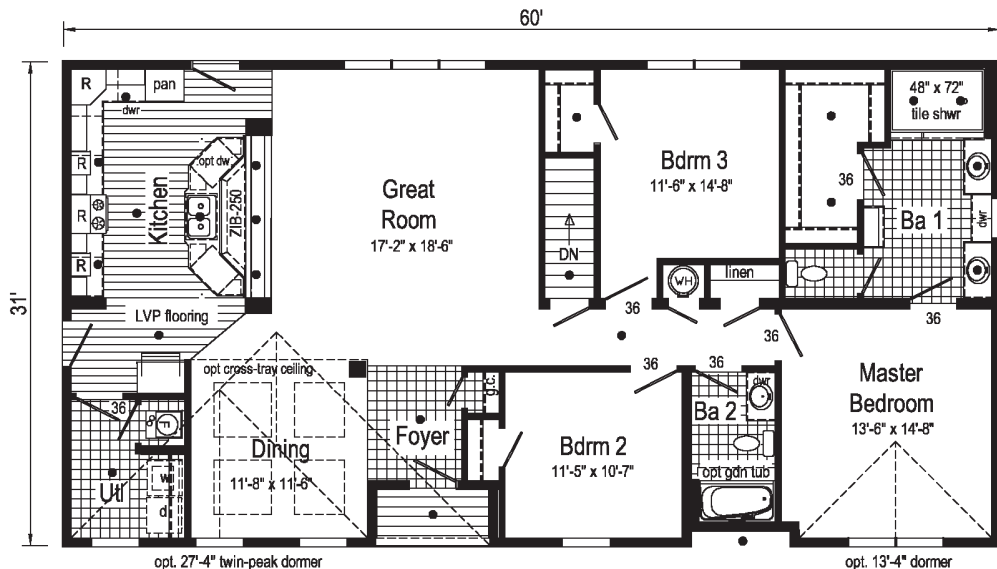


**Optional Attic Stairs**  
(omits linen)



**Optional Euro Kitchen**

• = Std. can light  
gl's = glass door cabinet  
Note: A portion of the LVP flooring is installed on site.



opt. 27'-4" twin-peak dormer

opt. 13'-4" dormer

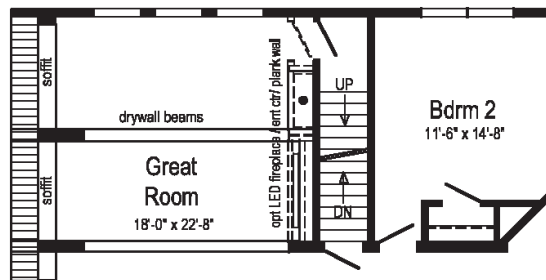
# Ultra 7



**2P2403X**

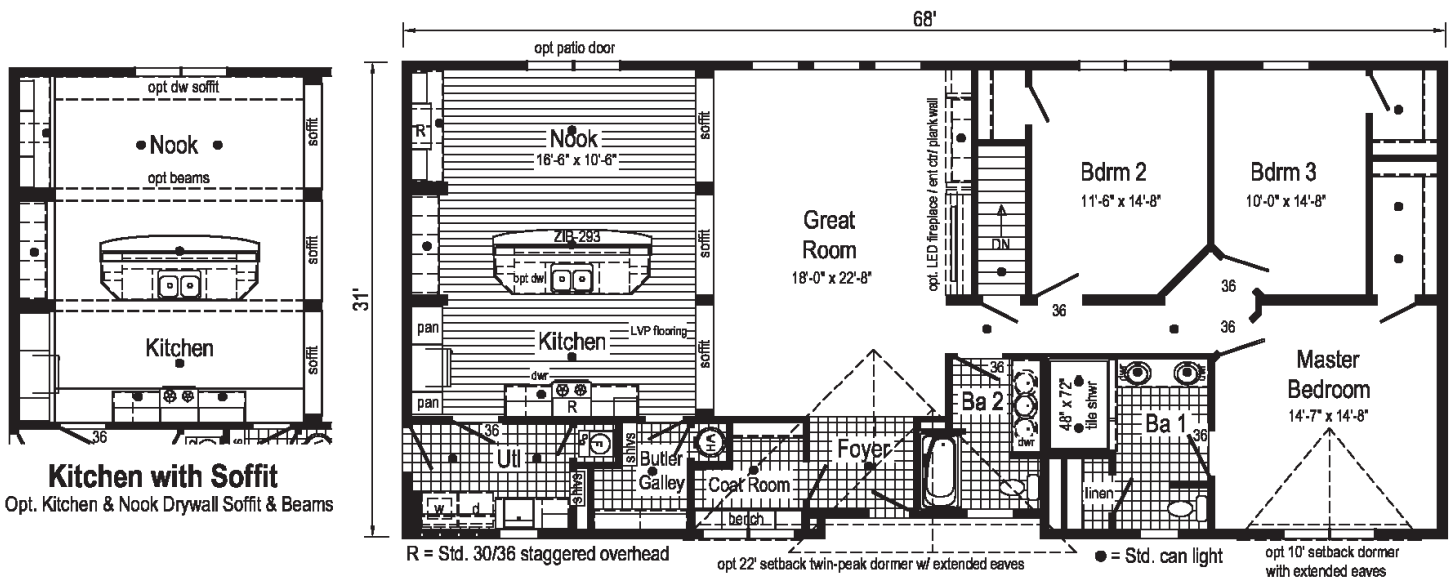
**32x68 Approx. 2089 sq ft**

Some features shown may be optional or added on-site by others.



### Optional Attic Stairs

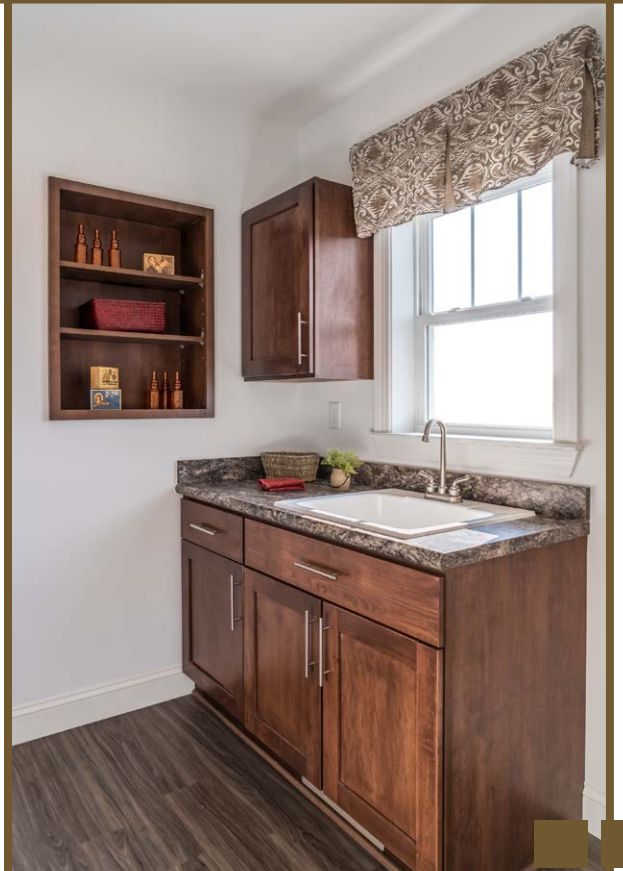
Note:  
Attic stairs requires drywall beams for dropped beams and extended support columns..

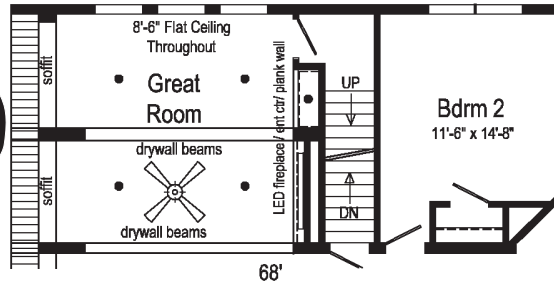


**Kitchen with Soffit**  
Opt. Kitchen & Nook Drywall Soffit & Beams



# Ultra 7 Photos





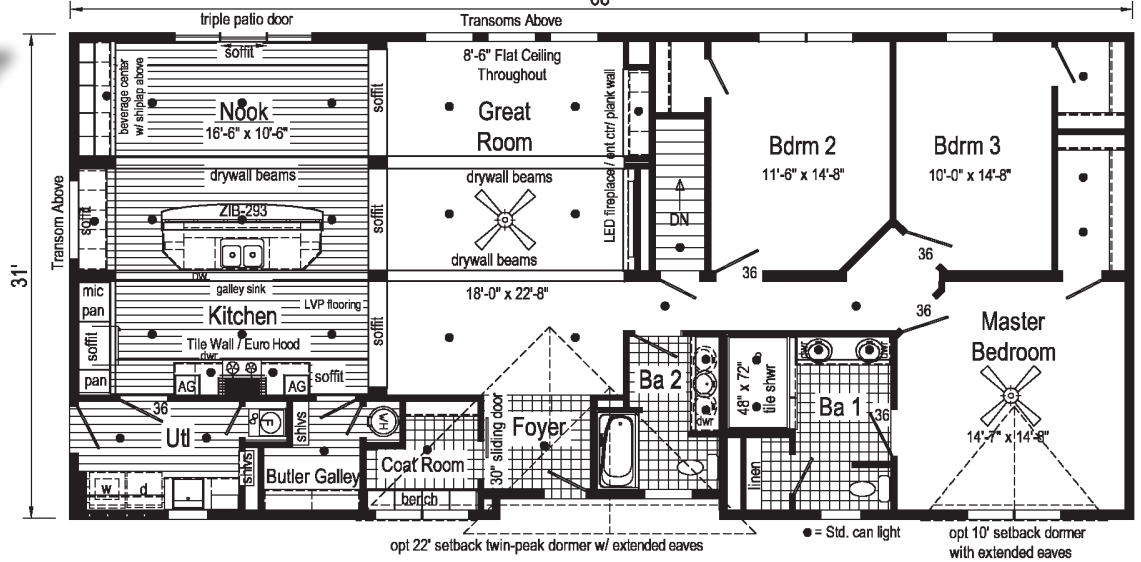
**Optional Attic Stair**

Note: Attic stairs requires drywall dropped beams and extended support columns..

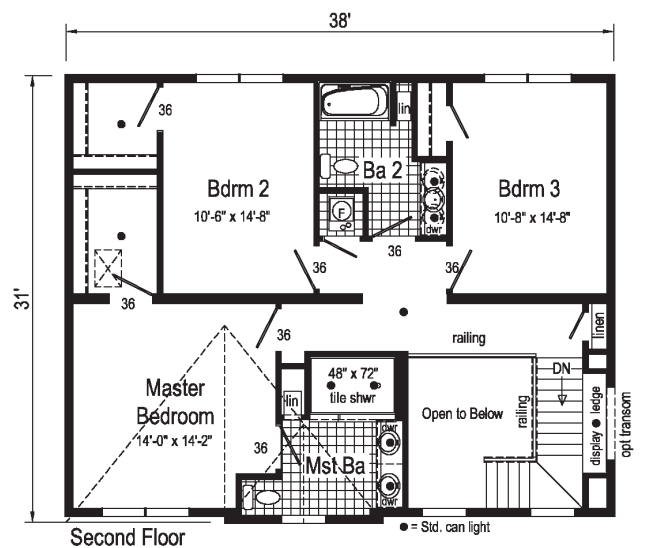
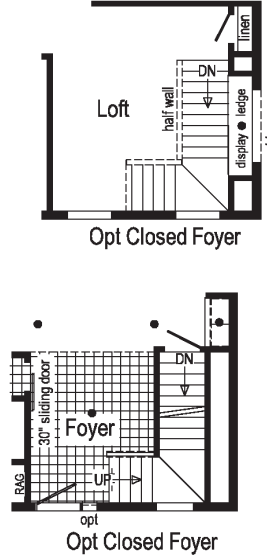
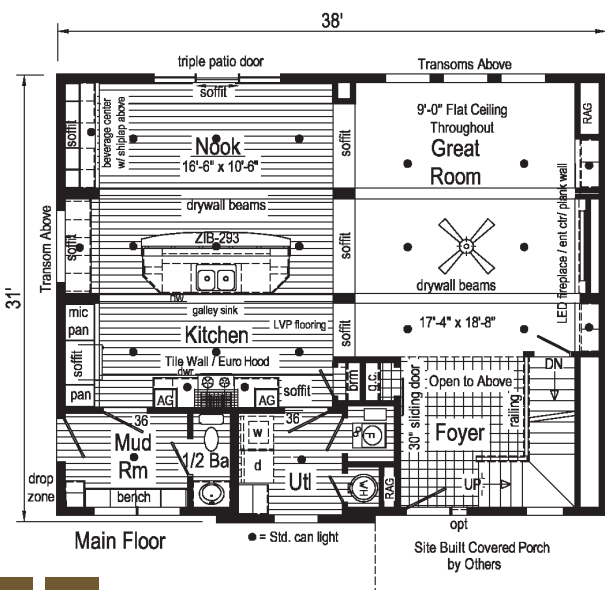
*Ultra 7*



Scan to Watch Video!



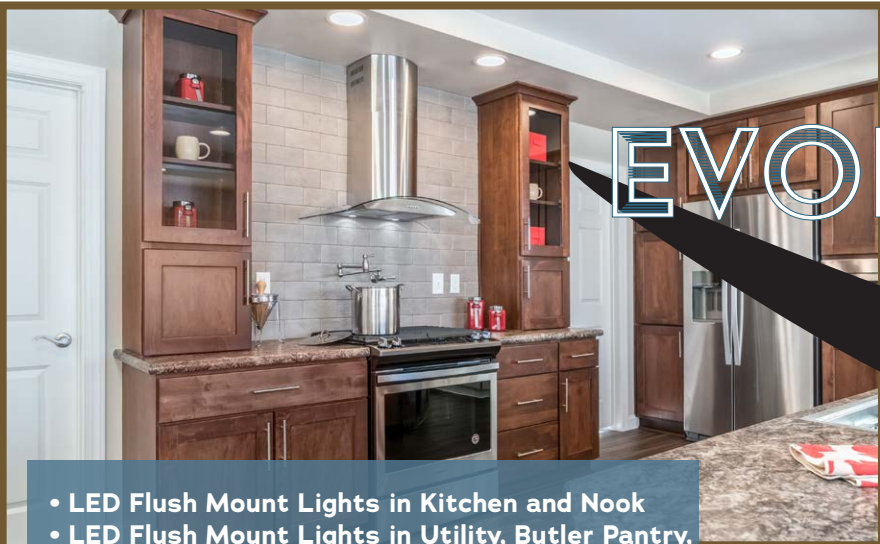
*Ultra 8*



# EVOLUTION

## BUNDLE

- LED Flush Mount Lights in Kitchen and Nook
- LED Flush Mount Lights in Utility, Butler Pantry, Hall, and Coat Room
- Drywall Beams in Kitchen and Great Room
- 8'6" Ceiling
- 42" Overhead Kitchen Cabinets with Soffits
- 10' Double Sliding Patio Door
- Transom Window on Kitchen Endwall
- (3) Transoms Above Great Room Windows
- Beverage Center in Nook
- Shiplap Accent Walls
- (2) Appliance Garages in Kitchen
- Chef's Signature Range Hood
- Ceramic Tile Behind Range
- Sliding Barn Door into Coat Room
- LED Fireplace w/ Ceramic Tile and Shiplap Entertainment Center
- (2) Framed Mirrors Over Master Vanity
- Drywall Soffits w/ LED Flush Mount Lights in Bathroom
- Whirlpool Ruby Appliance Bundle
- Ceiling Fan in Great Room and Master Bedroom
- Floorte in Utility and Butler Pantry



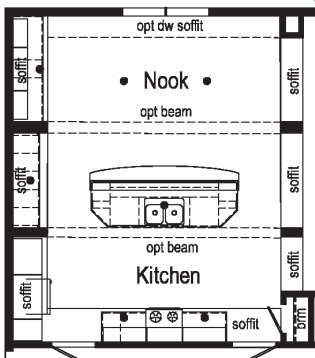
# Ultra 8



6P2403X

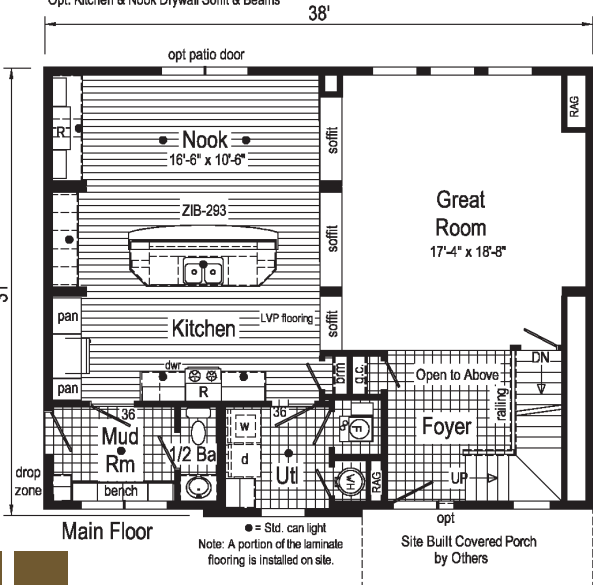
32x38 Approx. 2329 sq ft

Some features shown may be optional or added on-site by others.



**Kitchen with Soffit**

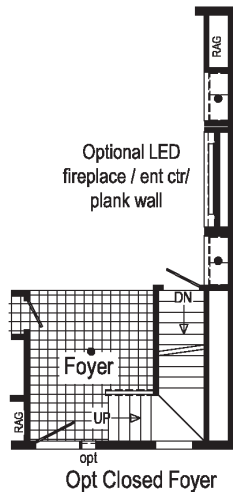
Opt. Kitchen & Nook Drywall Soffit & Beams



**Main Floor**

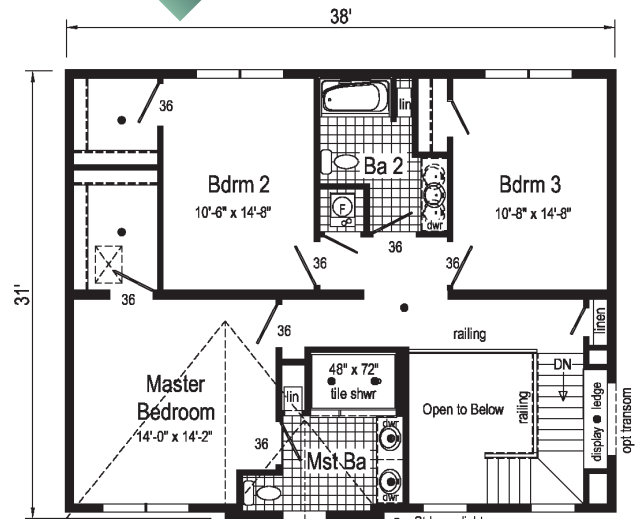
● = Std. can light  
Note: A portion of the laminate flooring is installed on site.

Site Built Covered Porch by Others

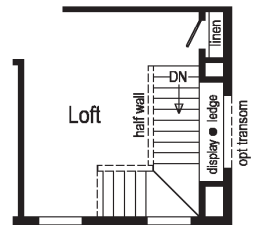


Optional LED fireplace / ent ctr/ plank wall

**Opt Closed Foyer**



**Second Floor**



**Opt Closed Foyer**

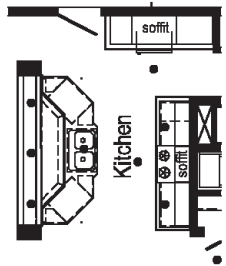
# Ultra 9



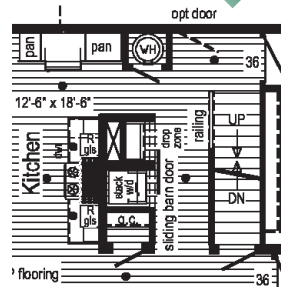
2P2404X

32x58 Approx. 1780 sq ft

Some features shown may be optional or added on-site by others.

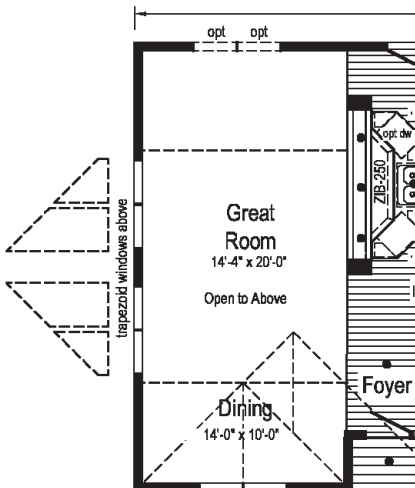


**Kitchen with Soffit**  
Optional full Perimeter Drywall Soffit and Beams Not Available.

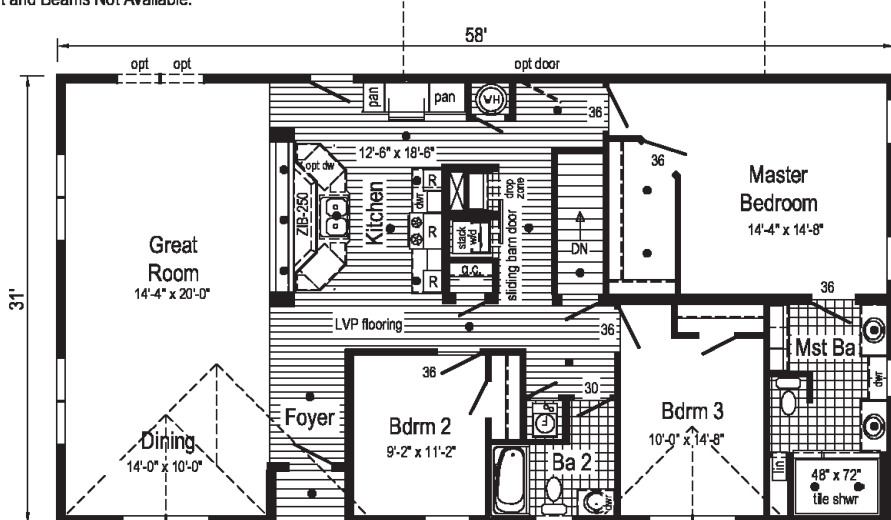


**Optional Euro Kitchen**

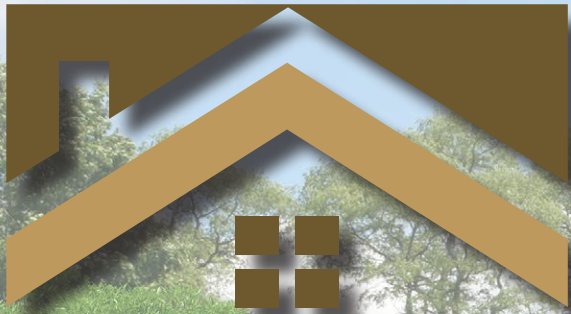
**Opt. Open Attic Stairs**  
Only available with 9/12 or 12/12 roof



**Optional Chalet Cape Roof**



● = Std. can light  
gls = glass door cabinet  
Note: A portion of the LVP flooring is installed on site.



**PENNWEST**  
H O M E S



Your Independent Retailer is:

**Pennwest Homes**  
4 Pennwest Way Route 38  
Emlenton, PA 16373  
[www.pennwesthomes.com](http://www.pennwesthomes.com)

**Connect with Us!**

